

L A Z

www.EyeComTec.com

ECT MORSE





ECTmorse v1.13.x

User Guide



About ECTmorse

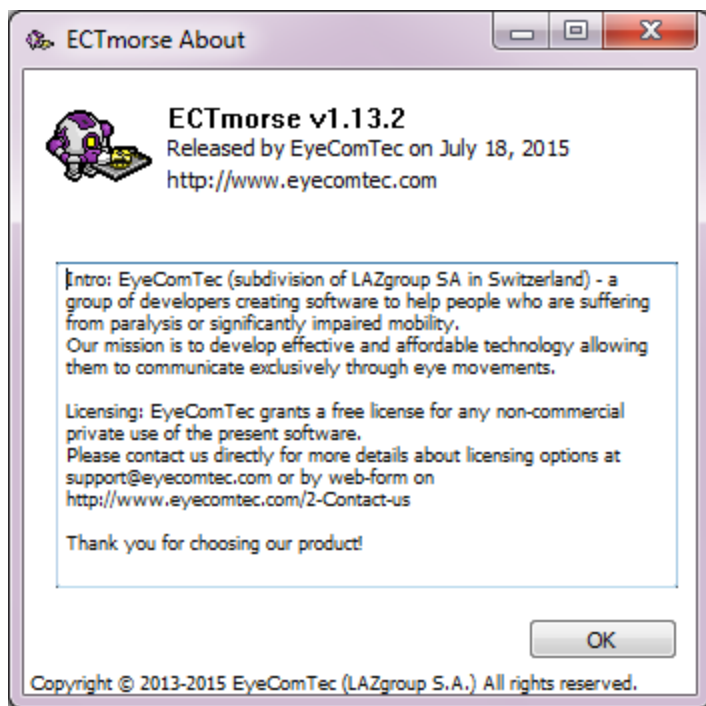
ECTmorse (EyeComTec Morse) is a program designed to emulate the Morse telegraph and help sufferers of various forms of paralysis and other disabilities by allowing them to type using the universal language of Morse code. The program may be used on nearly any PC or laptop because of its low system requirements. Even most older and low end computers should be able to run ECTmorse.

ECTmorse also has language options which add to the accessibility of the program to people of various demographics. The default language of the program is English.

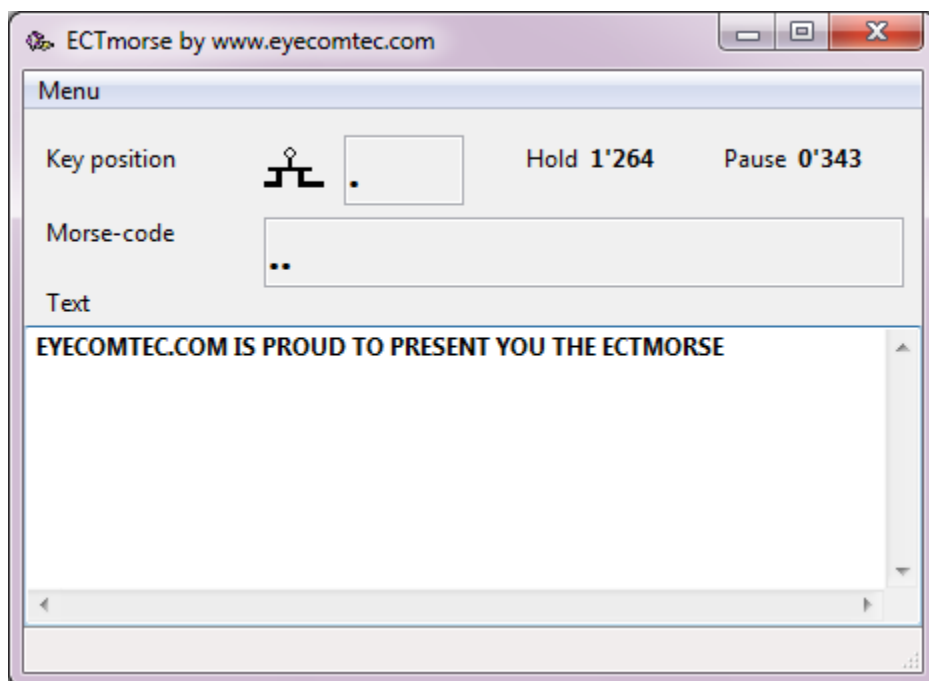
ECTmorse is easy to use as well. All it takes is the pressing of a single key, and ECTmorse can enable the user access to any letter or symbol needed to type. The typed characters are displayed in the program. This ensures that the user may review their work and edit it to their individual needs.

Beyond the ease of use and language options, nearly every aspect of ECTmorse can be customized in order to better fit the needs of the user. This can include anything, such the key pressure time for writing dots and dashes allowing the user to write at their own pace or even fully customizable characters. Work can be saved to a time stamped file, allowing the user to see the evolution of the piece that is currently being typed over time. In addition to changing the settings, the user can use hotkeys to increase the efficiency of the program. These are just a few of the many customization options available in the program that can be found in the user guide and site for ECTmorse.

ECTmorse is incredibly portable. There are no complicated installation processes, so even the most novice of computer users can run and use the program. Start up is really simple and only requires that the user starts the program. The settings may be chosen by the user, then saved to a file. The user may have a plethora of settings files, and thus have the ability to choose the file that best suits a given situation, allowing the user to type more quickly and efficiently.



(Fig. 1 ECTmorse About Window)



(Fig. 2 ECTmorse Main Window)

Benefits of using ECTmorse

ECTmorse (EyeComTec-Morse) has many features that give it an edge over the competition. Some of these include:

Price – ECTmorse is completely free to download and use for non-commercial purposes. Individual users don't need to pay for a thing.

Accessibility – ECTmorse has incredibly low system requirements, so even a low end PC or laptop can run the program.

Portability – ECTmorse can be kept in an external storage device like a flash drive or SD card. It can run off of that storage device without any kind of installation needed. This also means that even novice computer users can run and use the program.

Versatility – ECTmorse is fully customizable. Every aspect of the program can be changed to fit the needs of the user, and all of the changes can be saved to a file and reloaded later. Even the Morse dictionary file can be expanded to include custom codes that create special symbols, even Egyptian hieroglyphs. This gives the user the option of having multiple settings files for any given occasion

Usability – ECTmorse is easy to use. A single key is all that is required to operate the program. As the user types, the characters appear in the program and allow the user to save their progress and edit the text that has been written.

All of these features make ECTmorse able to compete with the expensive software in the market while still remaining free for those who truly need it, making it the best choice when compared with similar software.

Interface and menu

When the user first opens ECTmorse, they will be presented with the main window of the program. This is where the types and where the typed text is displayed. If the user left-clicks “Menu”, the main menu of ECTmorse is displayed.

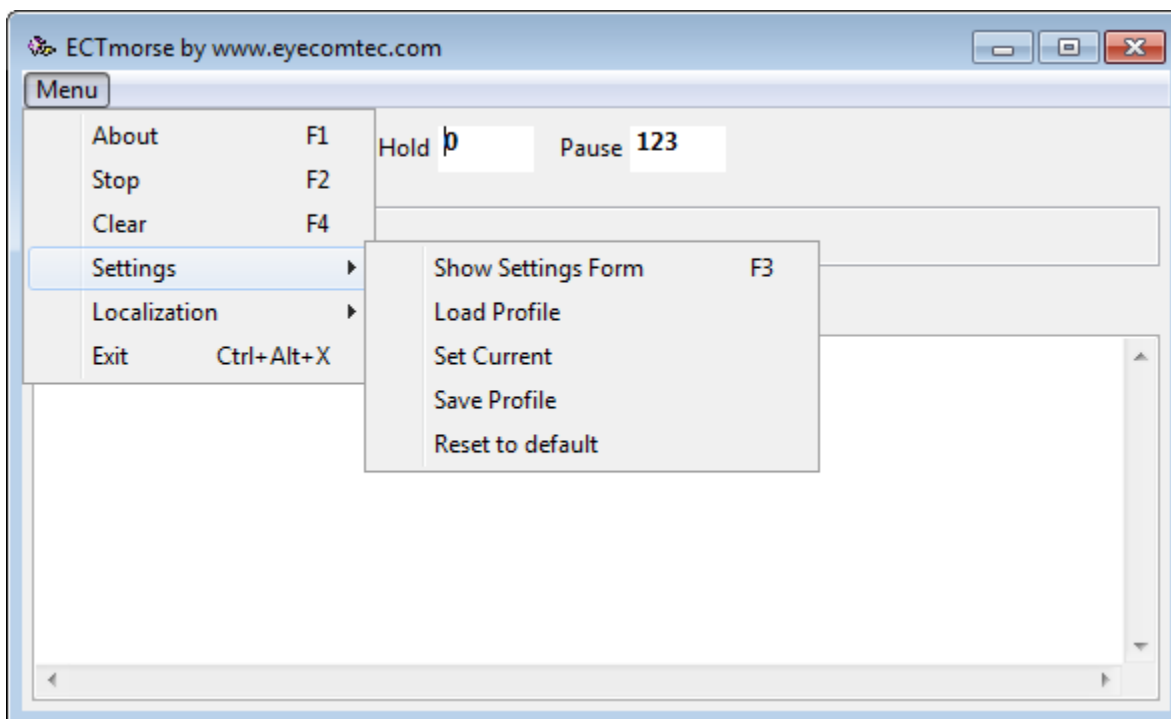
The menu items are as follows: **About, Start/Stop, Clear, Settings, Localization, and Exit.**

About (F1). This item displays the licensing of the program containing the information about the version, the release date and the author of the program.

Start/Stop (F2). This tells the program to start typing what is entered in Morse code. After selecting start, the option changes to stop. Stop tells the program not to type what is entered in Morse code.

Clear (F4). This deletes all the characters in the text box. This does not change any saved files though.

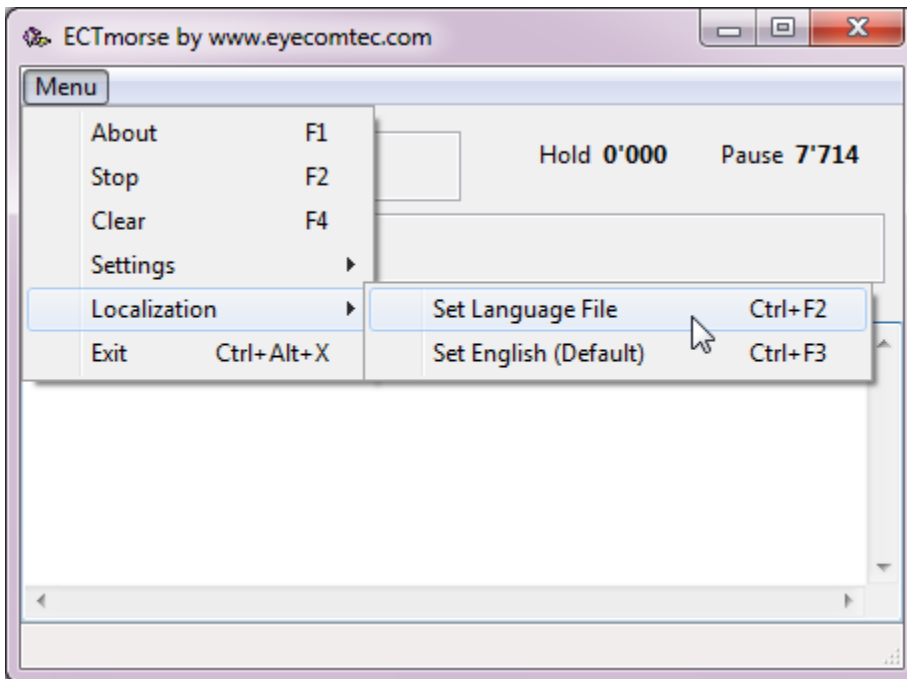
Settings. This opens up a sub-menu. There you can show the advanced settings menu (F3), load a settings profile, set the current settings profile so that it is used rather than the default, save the current settings profile to a file, or reset the settings to the original default settings. (see fig. 3)



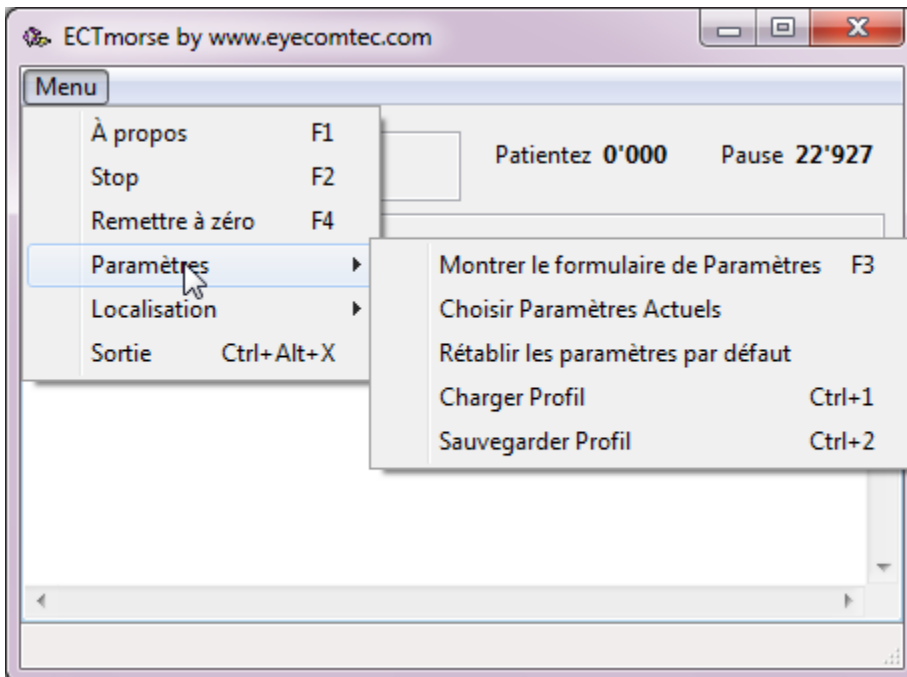
(Fig. 3 ECTmorse Main Menu Settings)

Localization. This opens up a sub-menu. There the user may set a language file (Ctrl+F2), set the language to English (Ctrl+F3), or dump the currently set language file (Ctrl+F5). (see Fig. 4)

Exit (Ctrl+Alt+X). This closes the program



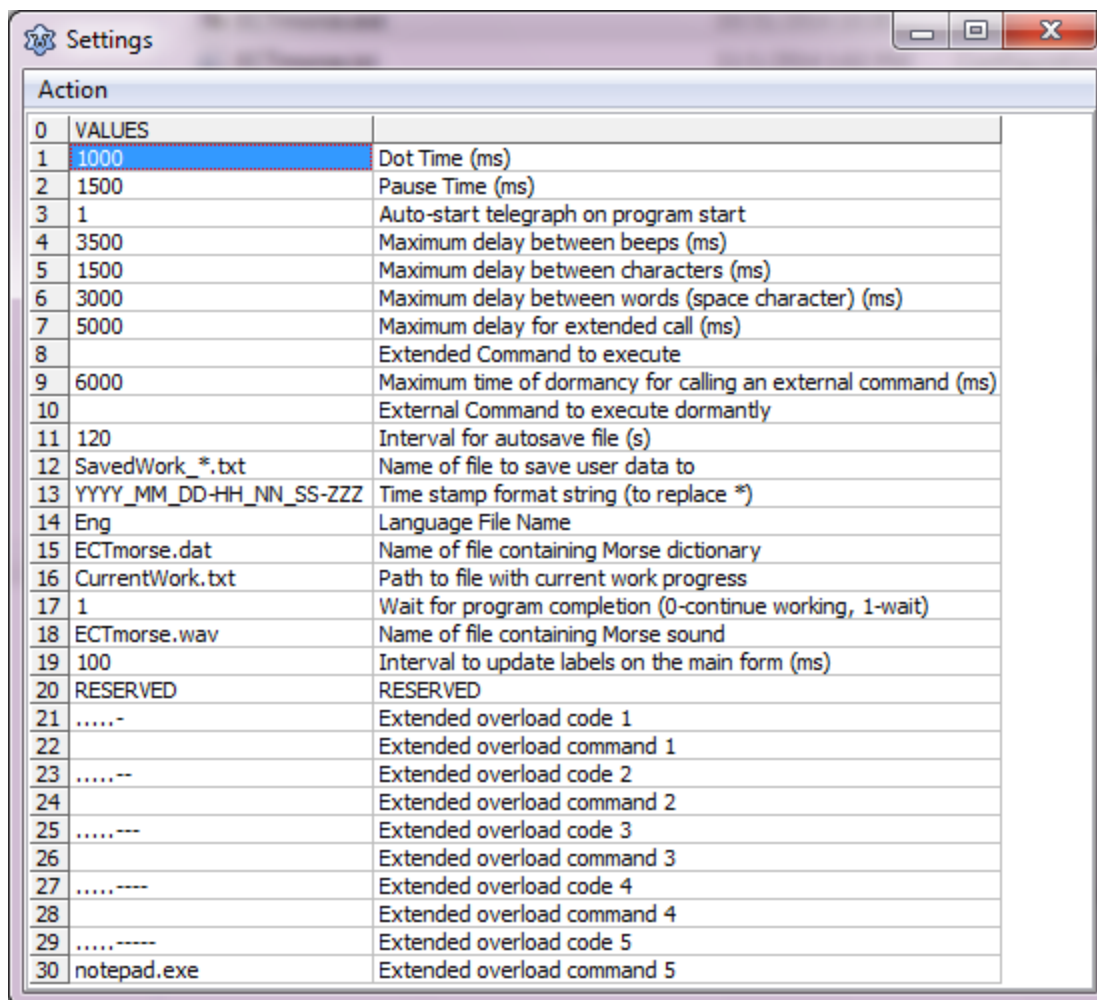
(Fig. 4 ECTmorse Main Menu Localization)



(Fig. 5 ECTmorse Localization to French)

Program Settings

1. **Key pressure time for writing Dot (.)** – Sets the amount of time needed pressing the key to write a dot (.)
2. **Key pressure time for writing Dash (-)** – Sets the amount of time needed pressing the key to write a dash (-)
3. **Auto-start telegraph on program start** – Sets the telegraph to automatically start when the program runs.
4. **Key pressure time to reject current beep** – Sets the time needed when the key is pressed for the current dot or dash to be rejected.
5. **Maximum delay between characters (convert code to character)** – Sets maximum time the program waits between Morse code input and converting the code into the corresponding character.
6. **Maximum delay between words (print a space character)** – Sets maximum amount of time needed before the program creates a space at the end of a word.
7. **Key pressure time for execution of extended command** – Sets the amount of time needed pressing the key for the extended command to be executed.
8. **Extended Command to execute** – Name of the program with parameters to be executed.
(Ex. “notepad.exe”)
9. **Maximum delay time for execution of extended command** – The maximum time of inactivity before an external command is executed.
10. **External Command to execute dormant** – File name of the external command to be executed after the maximum time of inactivity. (see 9)
11. **Interval for autosave file** – Sets the time in between auto saves of the currently typed message.
12. **Name of file to save user data to** – Sets the file name that user data is saved to.
13. **Time stamp format string (to replace *)** – Sets the format of the time stamp to be placed where the * is in the file name. (see 12)
14. **Language File Name** – Sets the language file.
15. **Path to Morse dictionary** – Sets the location of the file for the Morse dictionary, which is the sequences of dots and dashes and their corresponding characters.
16. **Path to file with current work progress** – Sets the file where the current work progress is saved.
17. **Wait for program completion (0-continue to work, 1-wait)** – Sets the program to wait till an executed command is closed and continue working or execute it in parallel and then continue working.
18. **Path to sound file** – This sets the location of the sound's file that will be played when the key is pressed.
19. **RESERVED** – Place holder
20. **RESERVED** – Place holder
21. **Extended overload code 1** – Unique sequence of dots and dashes that activate the (Extended overload command) when typed as the current symbol.
22. **Extended overload command 1** – Executable that activates when code (1) is entered.
23. **Extended overload code 2** – Unique sequence of dots and dashes that activate when the (Extended overload command) when typed as the current symbol.
24. **Extended overload command 2** – Executable that activated when code (2) is entered.
25. **Extended overload code 3** – Unique sequence of dots and dashes that activate when the (Extended overload command) when typed as the current symbol.
26. **Extended overload command 3** – Executable that activated when code (3) is entered.
27. **Extended overload code 4** – Unique sequence of dots and dashes that activate when the (Extended overload command) when typed as the current symbol.
28. **Extended overload command 4** – Executable that activated when code (4) is entered.
29. **Extended overload code 5** – Unique sequence of dots and dashes that activate when the (Extended overload command) when typed as the current symbol.
30. **Extended overload command 5** – Executable that activated when code (5) is entered.



(Fig. 6 ECTmorse Settings Window)

Updates

The latest version of ECTmorse can be downloaded directly from our site:

<https://eyecomtec.com/ECTmorse.zip>



Licensing agreement

General Terms

This license agreement establishes substantive provisions, as well as describes the permitted and prohibited ways of use of the software developed by EyeComTec. The licensee has the right to use software products of EyeComTec only under the conditions described in this License Agreement.

All software and all related intellectual assets (copyrights, algorithms, source code and technical documentation) are fully owned by the EyeComTec (LAZgroup SA) company. EyeComTec can provide free exclusive and non-transferable license to any entities which are involved into charity or non-profit activities. In order to use the software for commercial purposes, such companies have to contact us directly and purchase a license. Any commercial use (with pecuniary interest) of the software developed by EyeComTec without license is strictly prohibited.

During the determination of the conditions and restrictions of use, the copyright holder provided all the information on a limited warranty basis as well as the rejection of any liability. This project is voluntary, and the parent company is not liable for any issued support packs or updates in front of those users who use software products of EyeComTec free of charge.

All the users are obligated to observe and follow the requirements of this License Agreement.

Restrictions on use

The end user is not allowed to use or permit the use of EyeComTec software products in any manner that may affect their functionality, including modification of the program binary source code and participation in any operation that is aimed at reverse engineering (decompilation) of software for personal or professional gain.

Additionally, the end user of the software under no circumstances has the right to change copyright information or use the names of software products in an inappropriate manner in order to obtain financial or material benefits. The user has no right to change, make copies, sell, sublicense, advertise or distribute EyeComTec software products in any manner, which is not allowed by this license agreement. As a charitable gesture from the company, all users are allowed to share EyeComTec software products installation packages among themselves and with other people.

Upon receipt of the license the user does not receive any right to own copies of the software, and the copyright holder may prohibit subsequent sales.

All licensees have no right to re-pack the software and distribute it by including the software in various installation packages that contain malicious programs or advertisement of any form.

Registration of users

User registration is the easiest and safest way to provide feedback between the development company and its consumers: patients and medical centers. During startup of the non-registered program, the user will see a web-browser window with the present registration page.

- [Registration Form for Private non-commercial client \(people with physical needs to use our products\)*](#)
- [Registration Form for Medical organizations \(commercial and charitable non-profit: hospitals, rehabilitation centers, doctors\)**](#)
- [Registration Form for Commercial non-medical clients \(involved in manufacturing, assembly, control, production lines\)**](#)

** Registration is voluntary for private non-commercial customers, but nevertheless desirable.*

*** Registration is mandatory for legal entities and commercial clients.*

Collection of such statistical data is extremely important for EyeComTec because it allows detailed information about the needs of specific users to be obtained, and it also improves the software in accordance with user needs. Program complex is developed continuously and many features of the current version were created due to feedback from users.

Registration opens the opportunity to participate in a loyalty program for commercial entities. The loyalty program starts immediately after registration is complete. Participation in the loyalty program gives users access to current and extended versions of the software on more favorable terms, as well as providing significant discounts.

Additionally the database of contacts allows EyeComTec to inform patients promptly about new and unpublished software products and updates of the EyeComTec program complex. Furthermore, users are able to receive information on the functionality of basic and advanced versions in a timely manner.

Differentiation of commercial and noncommercial license

1. Noncommercial License

1.A. Noncommercial license for clients with physical needs.

(this type of license does not apply to customers who are undergoing paid rehabilitation courses)

EyeComTec software products are provided free of charge to all users who are experiencing physical need and are in use of such category of programs. This group of people includes all those who suffer from various forms of paralysis or other muscular activity restrictions. All software products are free for non-commercial use, for example when the patient uses our software for text typing, they are not obligated to purchase a commercial license.

1.B. Noncommercial license for charitable organizations.

Charity companies and rehabilitation centers can use all EyeComTec software products free of charge if they provide their services to patients on a free basis.

2. Paid commercial License

2.A. Commercial license for paid clinics and rehabilitation centers.

Commercial licenses for program products of EyeComTec is necessary in any case of paid services provision by medical companies or rehabilitation centers. Such a commercial license is required for each separate copy of the program in use. Only one copy of each licensed program may run at the same period of time.

All assistants and third-party specialists who provide paid services to their patients and involve EyeComTec software products in their work are also obligated to purchase a commercial license.

In any case when the user is on paid treatment, involved in rehabilitation program in commercial institution, or uses paid services of any third-party medical specialist, they are prohibited to use personal non-commercial license ECT software. The user is strictly prohibited to use any EyeComTec software products to communicate directly with any paid healthcare specialist or representative of a commercial establishment. In such cases, the rehabilitation facility or attending specialist are obligated to use and provide to the patient their own commercially licensed copy of the software.

This restriction extends over the entire period of treatment or rehabilitation of the patient.

2.B. Commercial license for software integrators and resellers.

All companies and experienced specialists who provide paid services for the installation and integration of EyeComTec software products to third parties, as well as maintenance and technical support for such programs, are obligated to purchase a commercial license. Selling of software products to customers with physical needs is strictly prohibited (see section 2.1, paragraph A).

2.C. Commercial license for extended program versions, which are intended to use in non-medical environments.

The EyeComTec Company develops extended versions of their programs (in particular, ECTtracker) which are successfully used in factories, shops, automated assembly lines and quality control systems. Such program versions are distributed on individual licenses and are not intended for public distribution. In order to get full information about features of programs, full quotation including price of purchase and support, as well as cost of specialists training, please contact the EyeComTec Company.

Furthermore, our company develops various additional applications which can significantly enhance the functionality of our programs. When such applications are in use with extended versions of our programs they can be used for additional automation of analyzing and controlling manufacturing processes.

Specialists from the EyeComTec Company are ready to create individual systems which are most suitable to your needs. The system will be created on software modules which were created, taking into account all the distinctive features of the processes.