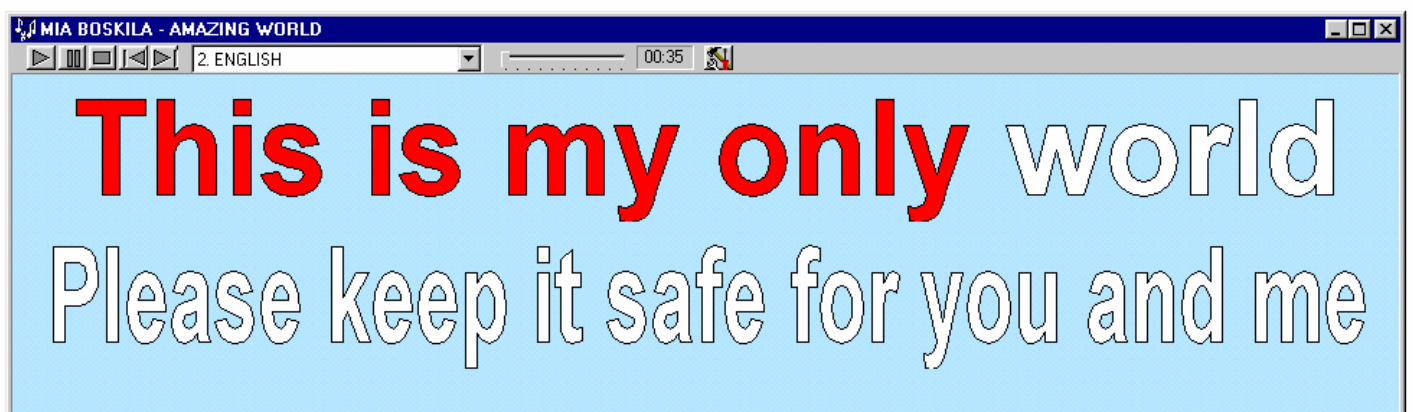


# LyricsPlayer™

## User Guide

### [Index](#)

- A. Introduction**
- B. System requirements**
- C. Installation process**
- D. How to operate the LyricsEditor™**
- E. How to operate the LyricsPlayer™**
- F. Preferences**
- G. Uninstall**
- H. Technical Support**
- I. About**
- J. Software License Agreement**



## A. Introduction

LyricsPlayer™ is a very small software program that enables people listening to a CD to see the lyrics of the song being played, in karaoke format, on their computers.

This is a very useful enhancement for music lovers.

Lyrics can be viewed on a PC by the CD holder only, and only when the CD is being played. They cannot be printed.

LyricsPlayer™ will boost the sales of selected CD's in music stores. It will also bring many new visitors to the record company web site. Implementation is cheap and simple: Music stores can add, at any time, a LyricsPlayer™ sticker/tag to every CD new or old. Preparing the encrypted time coded lyrics and hosting them on the web is very easy.

There are millions of music lovers who would love to read the lyrics while listening to a CD. The LyricsPlayer™ provides added value to every musical CD and will enhance their sales worldwide.

## B. System Requirements

- Windows 95/98/XP or Windows NT 4.0 or later.
- CD ROM drive.
- Internet connection.

**The LyricsPlayer™ Program can edit and play any type of music (audio) CD.**

## C. Installation Process

Check that your PC meets the System Requirements for operating system and hardware requirements described above.

Close down all Windows programs.

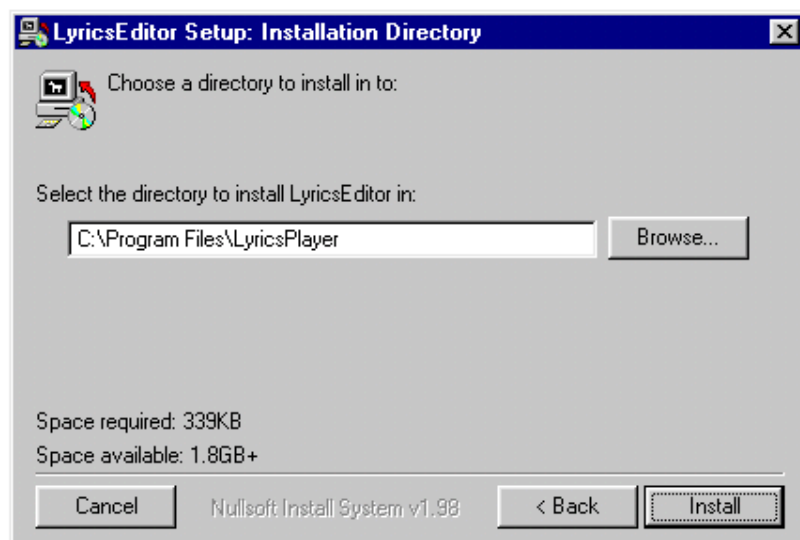
### I. Installing the LyricsEditor™

Using Windows Explorer, navigate to the directory where the distribution file **LyricsEditor.exe** was saved, double click on this file and follow the instructions displayed on the screen.

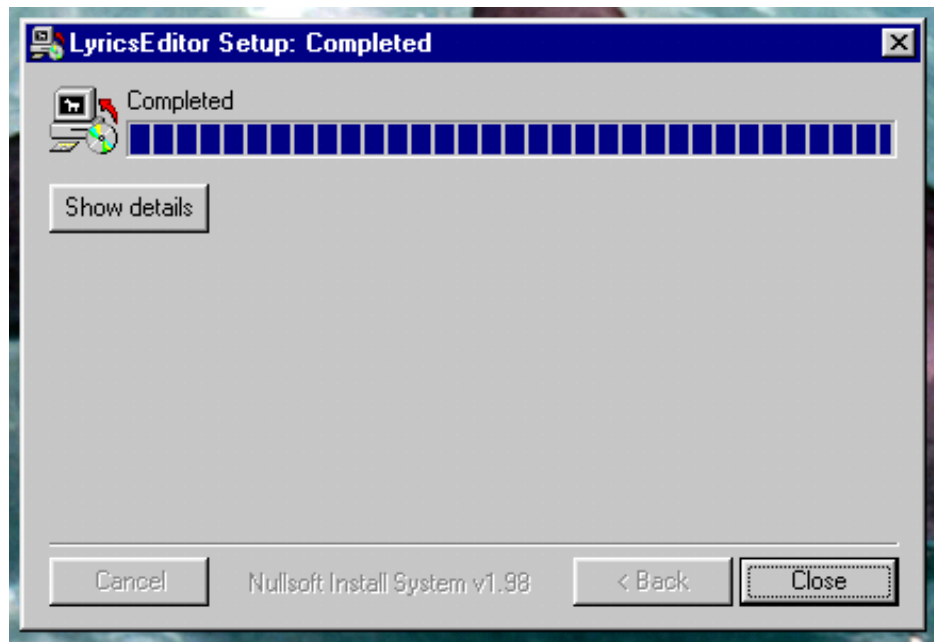


Press the "Next" button.

LyricsEditor™ will be installed into a default folder under Program Files. If you wish to install the software elsewhere, you may do so at this point in the installation process.



Click the "Install" button.

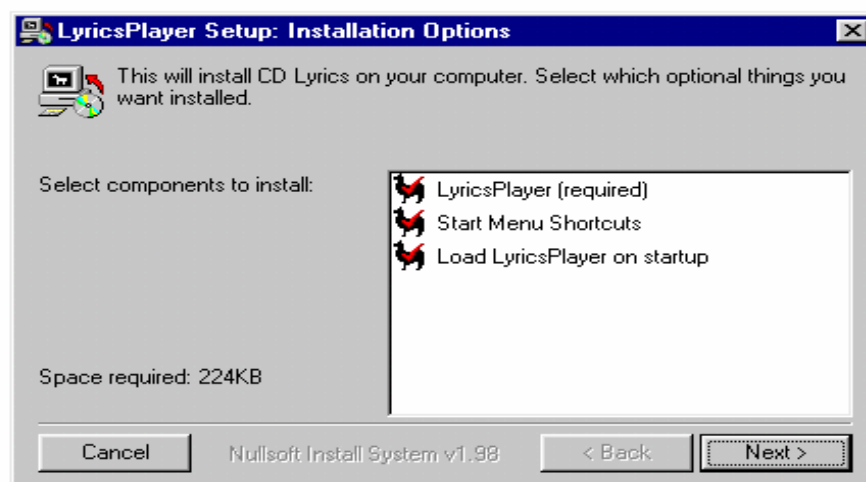


Click the "Close" button.

LyricsEditor™ installation is complete.

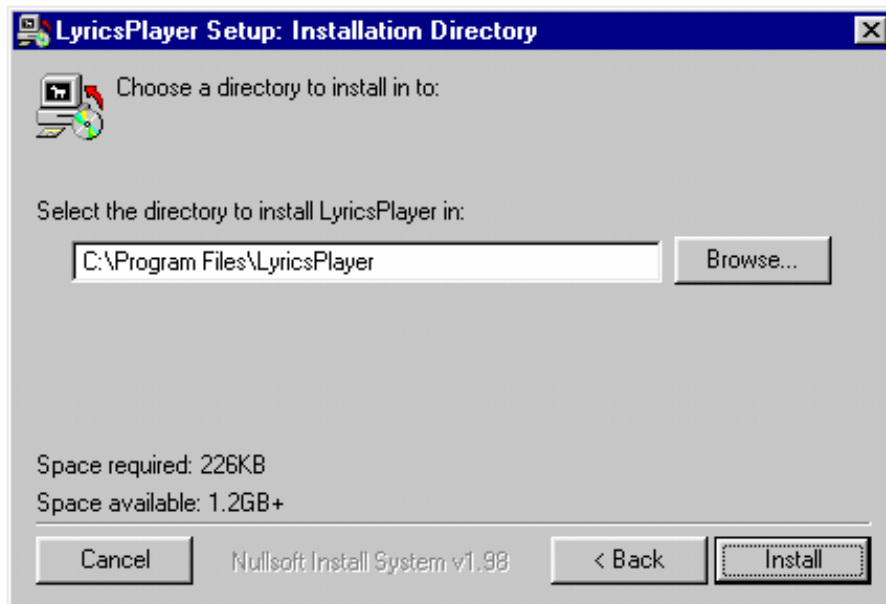
## 2. LyricsPlayer™ Installation

Using Windows Explorer, navigate to the directory where the distribution file **LyricsPlayer.exe** was saved, double click on this file and follow the instructions displayed on the screen.

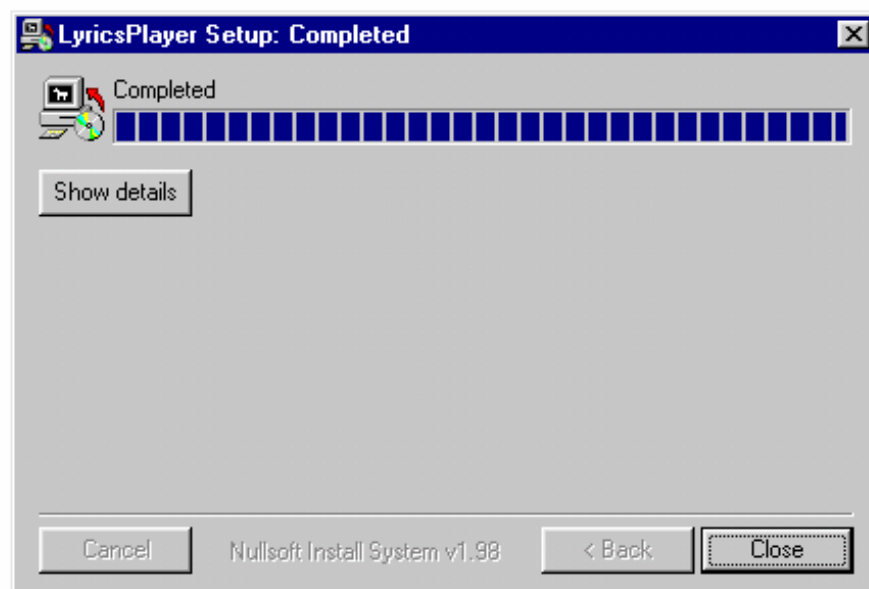


Press the "Next" button.

LyricsPlayer™ will be installed into a default folder under Program Files.  
If you wish to install the software elsewhere, you may do so at this point in the installation process.



Click the "Install" button.



Click the "Close" button.

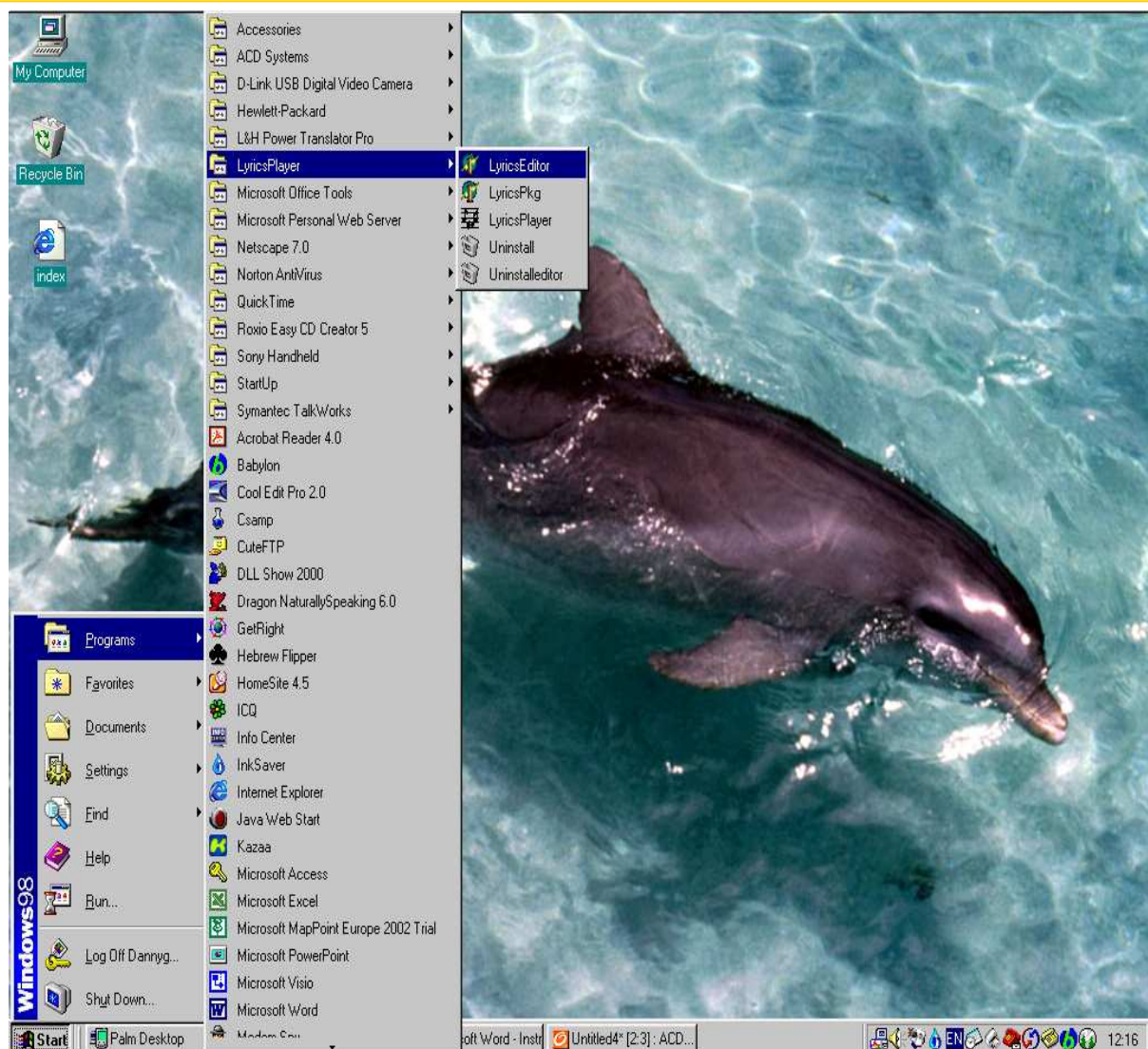
LyricsPlayer™ installation is complete.

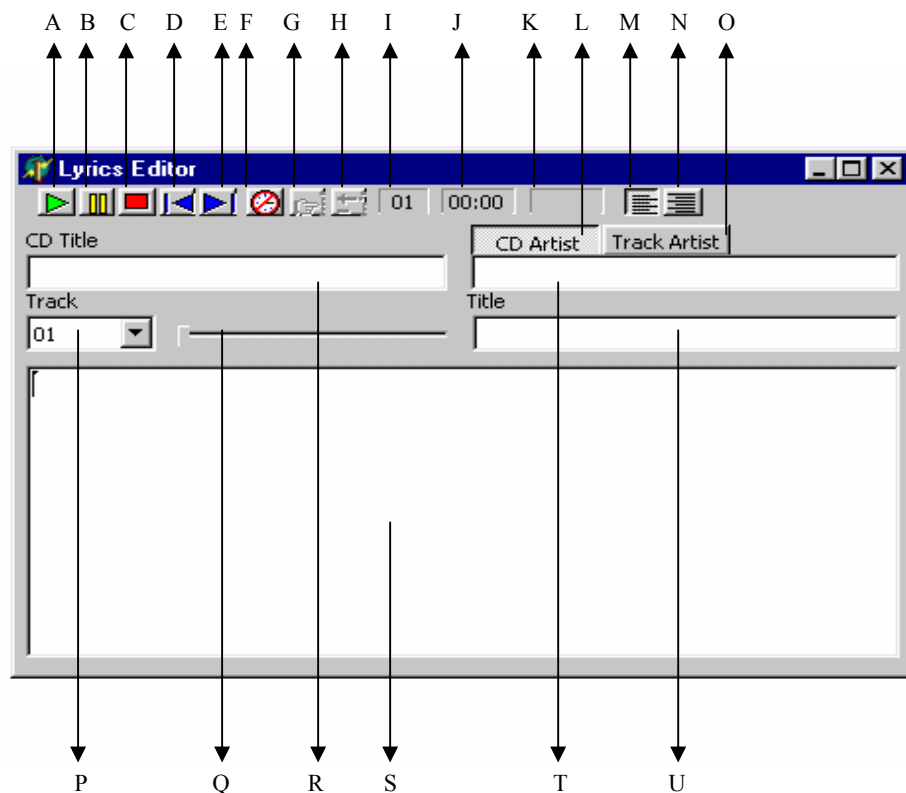
## D. How to operate the LyricsEditor™

### 1. Launching the LyricsEditor™

In order to use the program, you need to enter the lyrics of the CD of your choice and add the appropriate TimeStamps- For that purpose open the LyricsEditor program as follows:

Select [Start] > [Programs] > [LyricsPlayer]>[LyricsEditor]

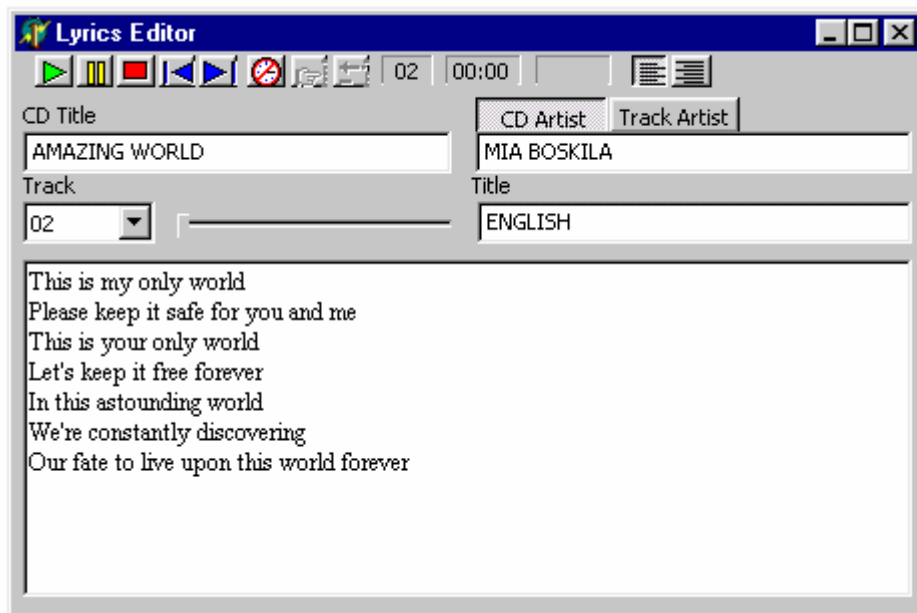




- A. Play.
- B. Pause.
- C. Stop.
- D. Play previous track.
- E. Play next track.
- F. TimeStamp mode.
- G. Replace/Add current TimeStamp.
- H. Delete TimeStamp.
- I. Current track.
- J. Track time.
- K. N/A.
- L. CD artist name.
- M. Left alignment.
- N. Right alignment.
- O. Track title name.
- P. Current track.
- Q. Move to a specific time in song.
- R. CD title.
- S. Editing pad.
- T. Move to a specific time in song.
- U. Track title.

### 3. Editing with the LyricsEditor™

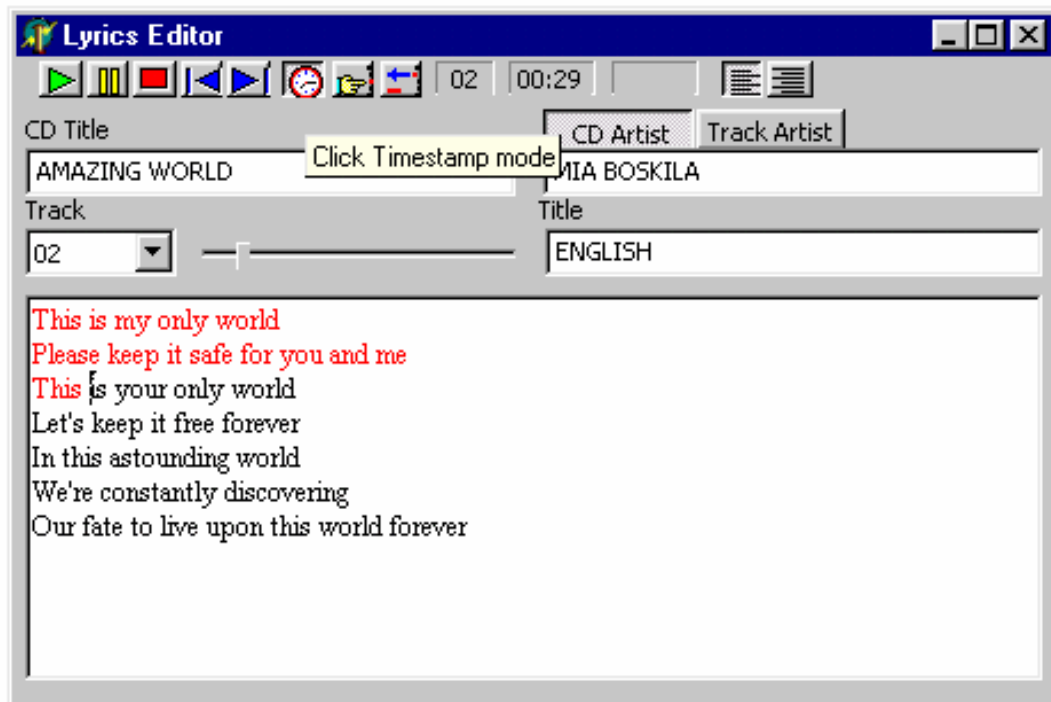
1. Insert a music CD into the CD-ROM drive.
2. Type in the name of the CD artist [L] or the track artist [O].
3. Select the track you want to edit [P].
4. Type in the track title [U].
5. Type the lyrics for the track you chose. Do not type more than six words in a line.
6. You can search for lyrics on the internet and copy them into the editor pad [S]; Alternatively, you can click on the play button [A] and type the words while you listen to the track.



Once you have finished typing the lyrics- you are ready to TimeStamp.

#### 4. How to TimeStamp a track

1. Click on the TimeStamp mode button to enter or exit the TimeStamp mode [F].
2. Replay the track, and while playing click on the Add TimeStamp button (alternatively use can use the F1 button on your keyboard) to mark the song words according to the song.  
The words will become **red** after marking them.



3. If you made a mistake, while TimeStamping the song words, use the Delete TimeStamp button (alternatively you can use the F2 button on your keyboard).
4. If you need to change a word in the lyrics, use must first switch back to editing mode by clicking again on the TimeStamp mode button [F].  
The replace/Add current TimeStamp button [G] and Delete TimeStamp button [H] will become non active while in editing lyrics mode.
5. To return to TimeStamp mode, click again on the TimeStamp mode button [F].

You have just finished editing one track. If you want, you can play it with the LyricsPlayer™ program, or you can edit more tracks before playing it.

## **E. How to operate the LyricsPlayer™**

### **1. Launching the LyricsPlayer™**

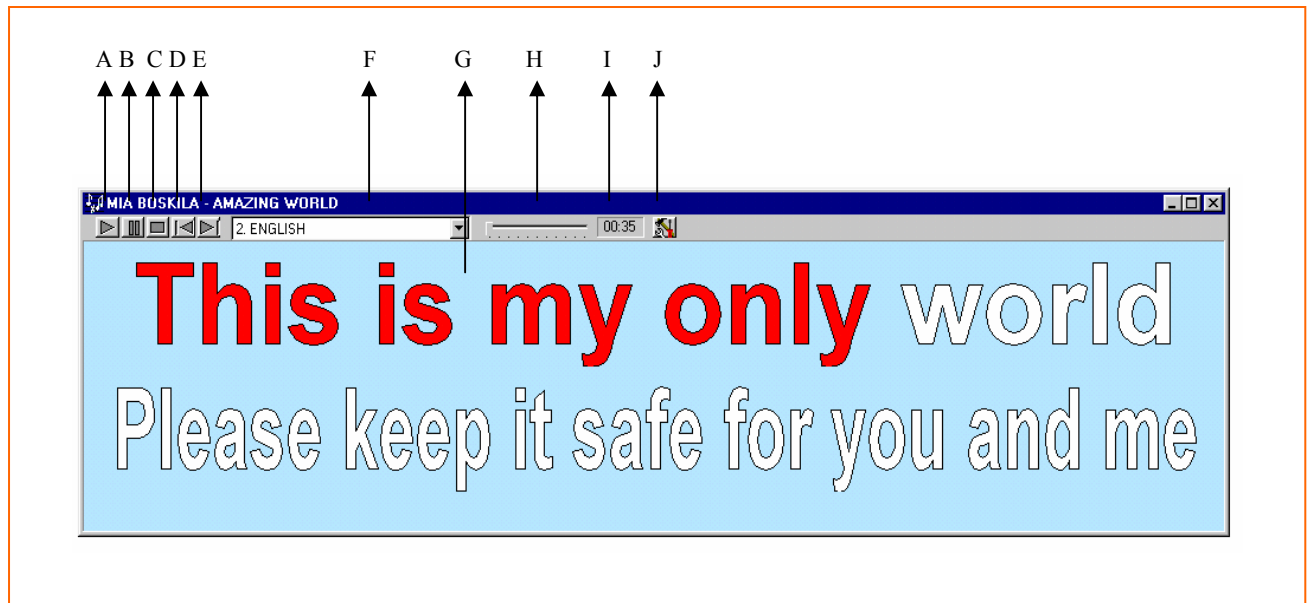
Open the LyricsPlayer™ program from the Start Windows menu as follows:

Select [Start] > [Programs] > [LyricsPlayer]>[LyricsPlayer]

If LyricsPlayer™ does not start playing automatically; please double click on the LyricsPlayer™ icon, which is located in the task bar, near the computer clock.

Lyrics should be displayed on the screen in karaoke style

## 2. The LyricsPlayer™



- A. Play.
- B. Pause.
- C. Stop.
- D. Play previous track.
- E. Play next track.
- F. Current track title.
- G. Current singing word.
- H. Move to a specific time in song.
- I. Current Track time.

## 3. Playing Lyrics with the LyricsPlayer™

Press the play button [A] to start playing the first track, you can use play previous\next track buttons [D] and [E] or current track explorer button [F] to navigate through the CD's tracks.

## E. Preferences



### **Popup Lyrics**

Lyrics will automatically appear on screen upon starting the LyricsPlayer™ program.

### **Auto Play Lyrics CD**

Upon starting the LyricsPlayer™ program, the CD will start playing automatically.

### **Always on Top**

LyricsPlayer™ window will be open on top of all other open Windows applications.

### **Search Lyrics Online**

If the computer is connected to the internet the software will search the LyricsPlayer web site for the song lyrics (This feature is not activated)

### **2 Lines display**

The LyricsPlayer™ window will display the lyrics in two lines.

### **4 Lines display**

The LyricsPlayer™ window will display the lyrics in four lines.

## **G. Uninstall**

1. Go to Settings/Control Panel/Add/Remove Programs.
2. Scroll and highlight Lyrics.
3. Press the Add/Remove button.
4. Confirm Lyrics deletion by selecting YES.
5. Un-Install is now complete

## **H. Technical Support**

Email: [info@lyricsplayer.com](mailto:info@lyricsplayer.com)

Fax: 972-3-5333325

Air Mail: **CD LYRICS**

POB. 2156

Neve Monosson

Israel 60190

## I. About

LyricsPlayer™ is a very small software program that enables people listening to a CD to see the lyrics of a song being played, in karaoke format, on their computers.

The LyricsPlayer™ can play the lyrics for every regular CD.  
To the best of our knowledge, this is the only published software, with this capability and the first of its kind.

Watching the lyrics for a regular CD is a feature that all music lovers need and appreciate.  
More often than not- it is very difficult to understand the lyrics just by listening to the CD.  
The LyricsPlayer™ displays the lyrics and also “paints” the words as they are sung.

This feature has many applications: open a small window while working on a PC and sing with the artist; Sing Along parties; Practicing and learning to sing a song and even Language Studies! (For instance, one can view a translation of the Lyrics while listening to the CD in its original language).

It should be noted that the LyricsPlayer™ can be used only by the holder of the musical CD and only while the CD is being played.

The software package includes the LyricsEditor™ which enables the user to insert lyrics and add the appropriate timestamps.

**The LyricsPlayer™ is a useful program for every music lover.**

**In addition, it is a powerful marketing tool for CD producers, Labels and**

**Record stores:**

The LyricsPlayer™ can boost the sales of selected CD's in music stores and bring many new visitors to the Record Company web site. Implementation is cheap and simple: Music stores can add, at any time, a LyricsPlayer™ sticker/tag to every CD, new or old. Preparing the encrypted time coded lyrics and hosting them on the web is very easy.

There are millions of music lovers who would love to read the lyrics while listening to a CD.

The LyricsPlayer™ provides an added value to every musical CD

**To learn more about this feature go to our web site:**

**[www.lyricsplayer.com](http://www.lyricsplayer.com)**

LyricsPlayer™ and LyricsEditor™ are trademarks of **CD LYRICS**.

**CD LYRICS DOES NOT PROVIDE ANY LYRICS UNLESS LEGALLY AUTHORIZED BY THE  
COPYRIGHT HOLDERS.**

**CD LYRICS**

POB 2156

NEVE MONOSSON

ISRAEL 60190

E mail : [info@lyricsplayer.com](mailto:info@lyricsplayer.com)

Copyright © **CD LYRICS** 2003

## **J. Software License Agreement**

LyricsPlayer™ by CD LYRICS

Software License Agreement

Please Read First !!

YOU MUST AGREE TO THIS SOFTWARE LISENCE AGREEMENT BEFORE YOU DOWNLOAD SOFTWARE FROM THIS SITE. IF YOU DON'T ACCEPT, PLEASE DO NOT DOWNLOAD.

1. Grant of Limited License; Software Use Restrictions.

In consideration for your acceptance of the terms and conditions of this Agreement , CD LYRICS will grant to you a personal ,non-transferable and non-exclusive right to use and execute the software on a single personal computer (a "PC"), without right to sublicense or duplicate or distribute the Software.

2. Ownership of Software .

You agree and acknowledge that CD LYRICS transfers no ownership interest in the Software, in the intellectual property in any Software or in any software copy, to you under this agreement or otherwise, and that CD LYRICS reserves all rights not expressly granted to you hereunder.

3. Transfer Restrictions .

This license is personal to you; you may not transfer the software and/or assign this License to any third party. If you attempt to transfer or assign this license, such transfer or assignment will be void and without effect.

4. Disclaimer of Software Warranty .

CD LYRICS PROVIDES THE SOFTWARE TO YOU "AS IS" AND WITHOUT WARRANTY OF ANY KIND, EXPRESS, STATUTORY, IMPLIED OR OTHERWISE, INCLUDING WITHOUT LIMITATION ANY WARRANTY OF MERCHANTABILITY, FITNESS FOR A PARTICULAR PURPOSE OR INFRINGEMENT. NO ORAL OR WRITTEN INFORMATION OR ADVICE GIVEN TO YOU BY ANY EMPLOYEE ,REPRESENTATIVE OR DISTRIBUTOR WILL CREATE A WARRANTY FOR THE SOFTWARE.

5. Limitation of Liability .

IN NO EVENT SHALL CD LYRICS OR ITS LICENSORS BE LIABLE TO YOU FOR ANY SPECIAL, CONSEQUENTIAL, INCIDENTAL OR INDIRECT DAMAGES OF ANY KIND,RESULTING FROM USE OF THIS SOFTWARE, HOWEVER CAUSED .

6. Period of licence

The right to use the player component of the software is granted without a time limit. The right to use the Editor component is limited to two weeks starting the day of download.

Copyright © **CD LYRICS** 2003