



1 CONTENTS

1	Contents	1
2	Overview	1
3	Background	2
4	Editor Screen.....	2
4.1	Song List.....	3
4.2	Song Filter.....	3
4.3	Set Name	3
4.4	Songs in the Set.....	3
4.5	Song Information	3
4.6	Chords and Lyrics	4
4.7	Notes	4
4.8	Song Key.....	4
5	The Settings Screens	5
5.1	General Settings	5
3.1	Display/Print/Tablet Settings.....	6
6	Song presentation.....	7
7	Hotkeys.....	8
7.1	Editor shortcuts	8
7.2	Presentation shortcuts	8
8	Appendix.....	9
8.1	Tips and tricks	9
8.1.1	The fix formatting button.....	9
8.1.2	Overlapping lyrics.....	9
8.1.3	Syncing OpenChords your songs with the rest of your music group	9
8.1.4	Multimedia.....	9

2 OVERVIEW

OpenChords is a guitar chord management system. It allows the user to present songs with guitar chords to a computer screen, so printing pages and pages of guitar chords is a thing of the past. Its opensource, easy to use, and has a clutter-free interface.

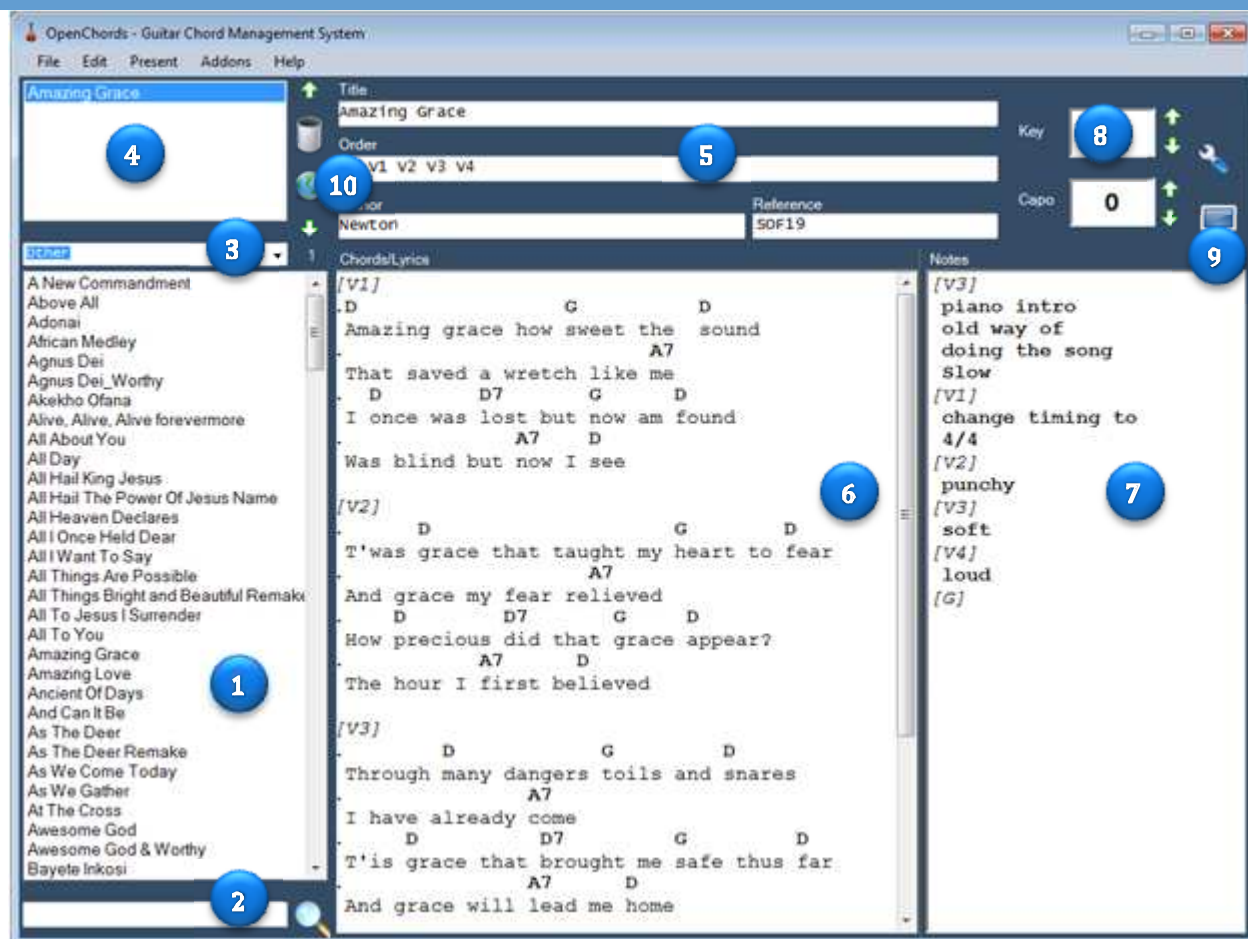
3 BACKGROUND

After discovering a great opensource application called OpenSong, for presenting song lyrics (and due to my distinct dislike of having to file my music after every practice and Sunday evening service), I was inspired to make something similar for guitarists.

I use OpenChords when I play in church and also when I do recording. I've been developing OpenChords in my free time for the past three years and finally decided to share it with the rest of the world. I hope you enjoy using it as much as I enjoyed making it.

If you wish to contact me for suggestions or to report bugs, you can email me on open.chords.app@gmail.com

4 EDITOR SCREEN



- 1 - Your list of songs
- 2 - Song filter (enter song name to filter in real time click the search button to search for words in the song itself)
- 3 - Name of the set (typically the name of the person who chose the songs)
- 4 - The songs in the set
- 5 - Information on the song itself
 - Title: song title
 - Order: the order in which to display each piece of the song
 - Author: the author
 - Reference: any form of code for the song e.g. SOF2123
- 6 - The lyrics and chords panel
 - “.” character = a chord line
 - “ ” (space) character = a lyrics line
- 7 - The notes panel to remind yourself how the song goes
- 8 - Buttons for transposing the song
- 9 - Present the song on the screen in the order that you have selected
- 10 - present the whole set of songs

4.1 SONG LIST

This is the list of songs that you'll be managing.

To add a new song to the collection, select File >> New and create your song. Note that you must give the song a title else it will not save.

To save a song to the collection, select File >> Save (or ctrl+S).

To delete a song from the collection, first select the file that you want to delete then select File >> Delete.

If you double click (or press enter) while any song is selected it adds that song to the currently selected set.

Tip1: If you want to search for a file, just start typing the name of the song, and the list will be filtered

Tip2: If you want to get to the song in the file system just click File >> Explore and it will open Windows Explorer with that song selected.

Tip3: If you want to present a single song, select the song and click on the present button.

4.2 SONG FILTER

There are 2 ways that you can use this field. 1) You can filter out the song names by just typing in the names. 2) You can click the search button (or press enter) to search within the lyrics of the songs for matching terms.

Tip: Press the UP or Down keyboard keys to get back to the song list once you are done filtering and have found the song you want to add to your set or the song you wish to present

4.3 SET NAME

This is just the name for a list of songs. If you want to add more, just type in the name of a new set that you would like to add and hit enter. You can remove sets by simply, selecting the set in the list and hitting the delete button on the keyboard.

4.4 SONGS IN THE SET

This is just a list of songs that you wish to present. If you want to move a song up or down in the list, select it and use the arrows next to the sets list. To delete a song, select it and press the "Delete" button on your keyboard.

Finally when you're ready to present your set, click on the "present set" button.

4.5 SONG INFORMATION

Title: this is just the name of your song.

Order: This is the order in which you would like the pieces of the song to appear

e.g. V1 C V2 C2 E will display Verse 1, Chorus, Verse 2, Chorus 2, Ending

There are a number of letters used for pieces of the song

- I = Intro or interlude
- C = Chorus
- P = Pre-Chorus
- B = Bridge
- V = Verse
- E = Ending

You can use any other letters and number combinations but only the ones above will get converted to more user friendly names when you choose to present the song(s)

4.6 CHORDS AND LYRICS

In order to display the chords and lyrics and sections properly we use a simple syntax

A letter with or without a number in square brackets like [C] or [V1] tells us that there is a new piece of the song

A dot (".") tells us that that line is a line with chords

A space (or in fact any other character but rather use a space) tells us that that line is for lyrics

4.7 NOTES

These notes are to remind you how to perform the song while the song is being presented in full screen view.

The notes need to be in the same order as you have chosen your song order. Also the [G] tag is a just a general tag where you put your general information for the song (e.g. its time signature or a pre-set that you use for your pedal for that song.)

4.8 SONG KEY

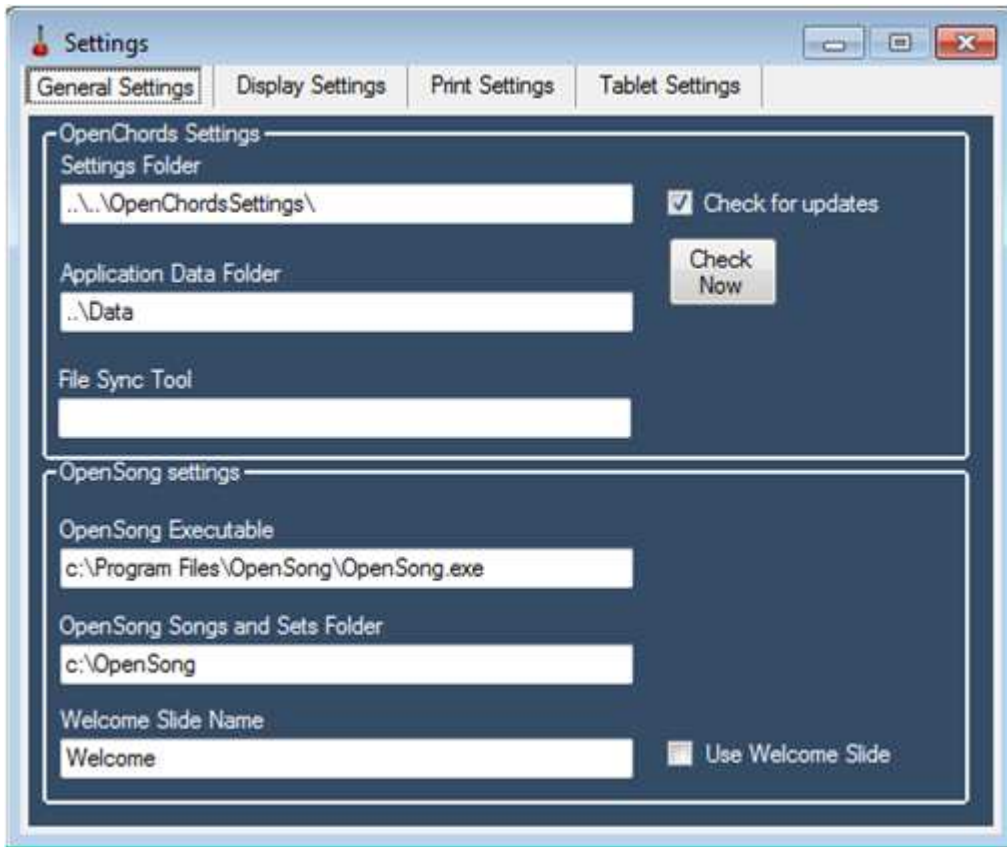
Here you enter in the Key for the song. If you wish to transpose the song (increase or decrease the key) press the plus and minus buttons next to the key field. The plus button will increase the key of the song by a semi tone and the minus button will decrease the key by a semi tone.

Sometimes you want to use a Capo when you playing. Use the plus button to increase the fret in which you will place the capo and the minus button decrease the fret in which you will place your capo.

5 THE SETTINGS SCREENS

5.1 GENERAL SETTINGS

Note: you can use both relative and absolute paths.



Settings Folder – this is the folder where OpenChords stores its Display and print settings, as well as information on the selected set and song from the previous use of the application.

Application Data Folder – this is the folder where OpenChords keeps its Songs, Sets and Notes for each song.

File Sync Tool – if you use a utility like “Free File Sync” you can make a link to it which you can then run in the addons >> File Sync Utility.

Check for updates on start – check for updates when OpenChords starts

Check now – checks for updates manually

OpenSong Executable – The path and executable for OpenSong

Opensong Songs and Sets Folder – The path that OpenSong stores its Songs, Sets, Backgrounds and settings.

Welcome Slide Name – this is only if you have a specific first slide for every OpenSong presentation. Just make a copy of the song slide and place it in the OpenChords application data folder and give it the same name as you’ve entered in this field.

Use Welcome Slide – check the checkbox if you want to use the welcome slide

3.1 DISPLAY/PRINT/TABLET SETTINGS

The following screen is used to tweak how your song will display/print

The screenshot shows a 'Settings' window with the following values:

Category	Setting	Value
Text Sizes	Title Size	14
	Presentation Order Size	14
	Content Size	18
	Notes Size	12
	Paragraph Spacing	9
Line Spacing	Content Line Spacing	9
Margins	Top Page Margin	13
	Bottom Page Margin	53
	Left Page Margin	18
	Right Page Margin	24
Dimensions	Width	1920
	Height	1080
Options	Dual Columns	<input checked="" type="checkbox"/>
	Show Notes	<input checked="" type="checkbox"/>
Reset Button		

Title size – the size of the song title

Presentation order size – this controls the size of the text which tells you where you are in the song

Content size – this is the size of the chord and lyrics lines

Notes size – just controls the font size of your notes to remind you of what to do in specific parts of the song

The margins – just control the distance from the edge of the screen to present the songs

Paragraph spacing – just controls the spacing between the each piece of the song

Content line spacing – just controls the distance between the song lines. Be careful with this one, you can make the song look terrible if you make this value too large or small

Screen width and height – this is greyed out because the program now automatically detects your screen resolution so you don't have to play with these values anymore

Dual column – this checkbox tells the program whether you want have 1 or 2 columns on the screen at once when displaying the song

Show notes – this checkbox tells the program whether you want to display the notes or not when you presenting the song.

Reset button – resets all settings and attempts to make the settings work for whatever screen resolution you are using.

Amazing Grace (Key - D) 1

Order: **v3** v1 v2 v3 v4 2

Verse 3

D G D
Through many dangers toils and snares

A7
I have already come

D D7 G D
T'is grace that brought me safe thus far

A7 D
And grace will lead me home

Verse 1 3

D G D
Amazing grace how sweet the sound

A7
That saved a wretch like me

D D7 G D
I once was lost but now am found

A7 D
Was blind but now I see

.....PTO..... 6

piano intro
old way of
doing the song
Slow

change timing to
5 4/4

1 - The title of the currently displayed song

2 - The order of the song. The parts in bold or the parts that are currently displayed on the screen

3 - The name of a piece of the song. In this case the name of the piece is Verse 3

4 - The chords and lyrics of the song

5 - The notes for the piece of the song

6 - PTO = please turn over (indicates that there is more of the song on pages that follow)

Tip: you will need to press the Escape key to leave the presentation.

7 HOTKEYS

There are a couple of shortcuts in OpenChords that will hopefully make your life a little easier.

7.1 EDITOR SHORTCUTS

Ctrl+N	Creates a new blank song
Ctrl+S	Saves the selected song to disk
Ctrl+F	Attempts to fix the song formatting.
Ctrl+O	Exports the currently selected set to OpenSong
Ctrl+P	Exports and opens pdf of the song
Ctrl+R	Adds a random song to the set
F5	Refreshes the song list and set list
F11	Presents the selected song
F12	Presents all songs in the set

7.2 PRESENTATION SHORTCUTS

PageUp	Go to previous song
PageDown	Go to next song
Up/Left	Go back one slide
Down/Right	Go to next slide
Spacebar	Go to next slide
1..9	Goes to the song with index number 1..9
Ctrl+D	toggle dual columns
Ctrl+N	toggle song notes
L	List of all songs in the set
-	Decreases font size
+	Increases font size
Ctrl+Equals	Increases song key
Ctrl+Minus	decreases song key
Escape	closes the song presentation window
G	Shows/Hides general notes

8 APPENDIX

8.1 TIPS AND TRICKS

8.1.1 THE FIX FORMATTING BUTTON

This function attempts to fix all the formatting in your song and writes a template to your notes panel following the order of the song that you chose in order.

8.1.2 OVERLAPPING LYRICS

If you find that the lyrics or chords of the song overlap while you are presenting the song, you have a few things that you can do to try and make things look a little better:

1. You can press Ctrl+D to only display one page of the song. This helps a lot with netbooks and other low resolution devices.
2. You can play with the + and – buttons on the keyboard to change the font size of all of the elements of the song.
3. You can go into display settings and play with the content size.
4. You can split up the lines of your song so they don't overlap with the second panel. One way to do this quickly is to select just before the word (in the lyrics line) that you want to split on and press the "Break/Pause" key on the keyboard to split the line and the chords above to the next line.

8.1.3 SYNCING OPENCHORDS YOUR SONGS WITH THE REST OF YOUR MUSIC GROUP

If you find yourself in the position that your entire music team wants to use OpenChords, keeping all the songs in sync can be a bit of a mission. I've been using Dropbox for a while now to solve this problem. You simply move the OpenChords folder onto your Dropbox and run OpenChords from your Dropbox. This way you can make sure your whole team has the same notes and chords for each song as well as the latest version of OpenChords.

Just be careful of the OpenChordsSettings folder. It's preferable to not sync this folder since it holds your personalized settings, but lucky Dropbox has a "Selective Sync" feature.

Another issue is conflicts..... Sadly someone will have to periodically go through the OpenChord's data folder and remove conflicting files.

8.1.4 MULTIMEDIA

You'll sometimes find that you can't remember how a song goes. To help remember you'll often need to listen to an mp3, or video of the song. If you place a multimedia file in the OpenChordsSettings\media folder and you give that file the exact same name as your song title a "Play" button will appear on the form to allow you to easily play the song in the default player for your system.

Feel free to use any of the following formats: mp3, mp4, avi, ogg, flv, and mkv, provided that your system has the ability to play these formats.