

A decorative graphic consisting of three blue, 3D-rendered spheres of different sizes. Two smaller spheres are positioned in the upper right quadrant, with thin blue lines connecting them to a larger sphere in the lower right quadrant. The lines originate from the top left and fan out towards the spheres.

Search for keyword in DB Schema

Search for a keyword string in SQL database schemas

This tool shows database objects that contain a keyword string.

SQLMgmt.com

1. Prerequisites

The following components are required to run this tool properly. If you do not have the components on your machine, you can download from Microsoft Download Center.

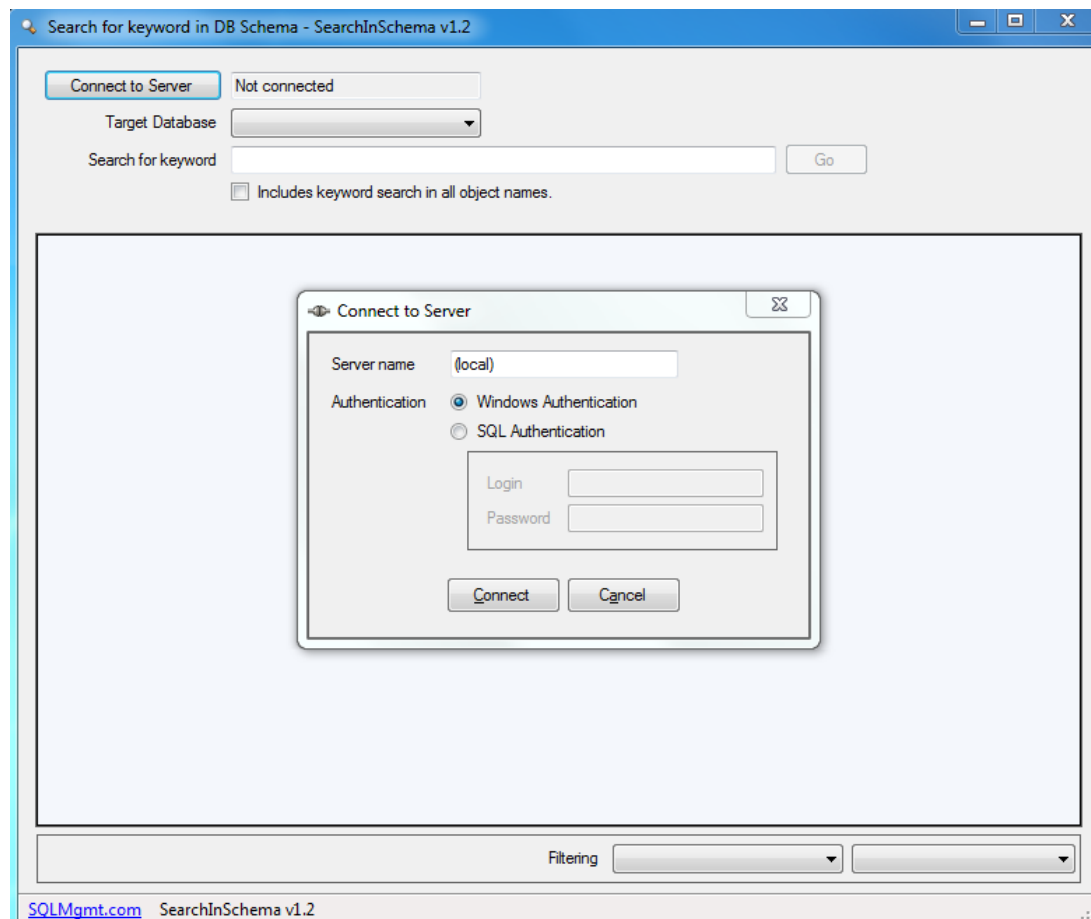
- .NET Framework 2.0 (Windows 8/ Windows 7 / Vista has built-in .NET Framework 2.0)

2. SearchSchema v1.2

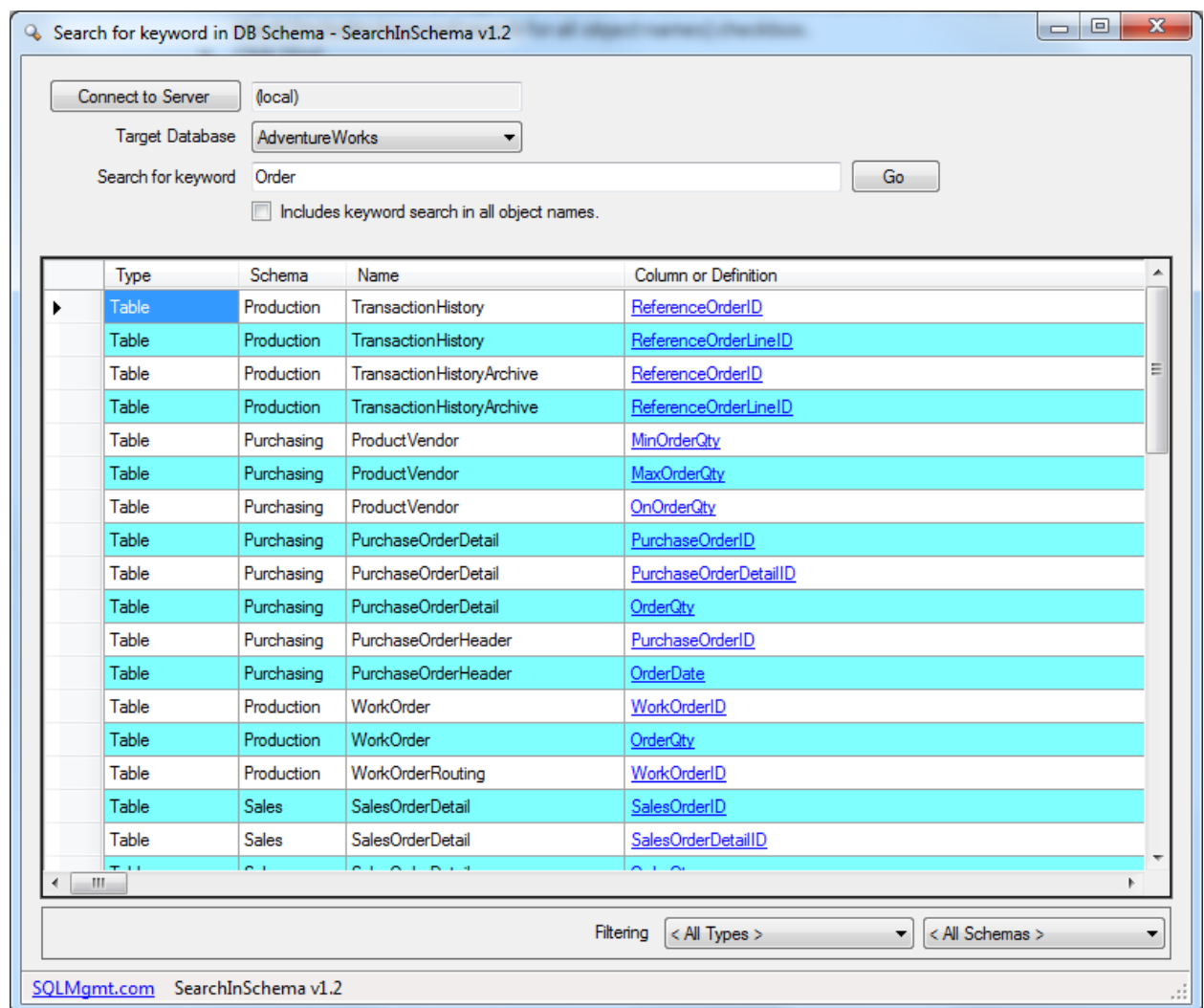
- This tool helps you to search database schemas for a string keyword.
- It searches tables, columns (including computed columns), views, stored procedures, XPs, functions, triggers and constraints in a database.
- It supports SQL Server 2012, SQL Server 2008, SQL Server 2008 R2, SQL Server 2005

3. How to use

- Run SearchSchema.exe
- Click [Connect to Server]



- Type [Server name]
- If you are using SQL Authentication, select [SQL Authentication] and enter Login and Password.
- Click [Connect].
- Select [Target Database]
- Type any string you want to find
- If you want to search all object names such as table names, view names, SP names, you can check [Includes keyword search for all object names] checkbox.
- Click [Go]
- Search progress will be started and run asynchronously.
- Once search is done, the application will show the result in the grid.



- In V1.2, new Filtering feature was added. Right down below the result grid, there are two filtering options – one for Types such as Table, SP, View, Function, etc. The other one is for schema such as dbo, Sales, etc. This is very convenient feature when search specific type of

schemas or schemas for a specific user.

- When clicking a link in [Column or Definition] in result grid, [View Details] window will pop up. From V1.2, this [View Details] dialog is not modal anymore, so you can launch many [Details] dialog at the same time.

Search String in SQL

If you want to search all table data for a string keyword, you can use this tool

<http://www.sqlmgmt.com/sql/Search-string-in-SQL>

NOTE: Any bug report or suggestion would be highly appreciated.

<http://www.sqlmgmt.com/contact.aspx>