

CD-RW/DVD-ROM Drive
MPD-AP20U

Quick Start Guide

Read this guide before connecting the drive

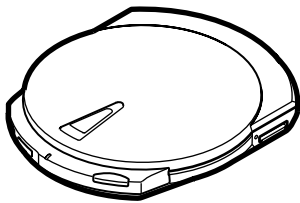
To be able to use this drive with your computer, follow the instructions in this guide step by step.

© 2002 Sony Corporation

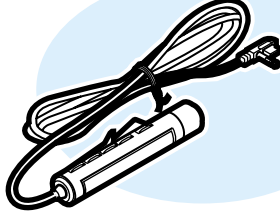
Printed in Malaysia

1 Verifying the contents of the package

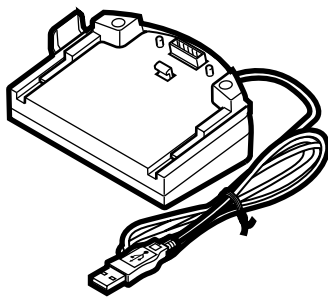
The drive



Remote control



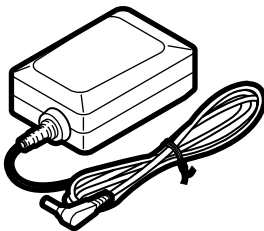
Cradle



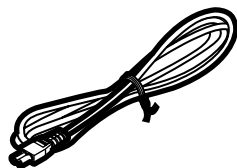
Headphones



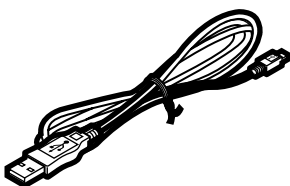
AC power adapter



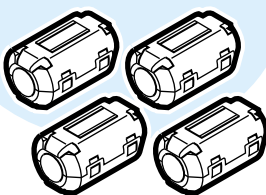
Power cord



USB cable



Ferrite clamps (4)



Software disc

User's guide

Quick start guide (this document)

Software quick start guide

Warranty card

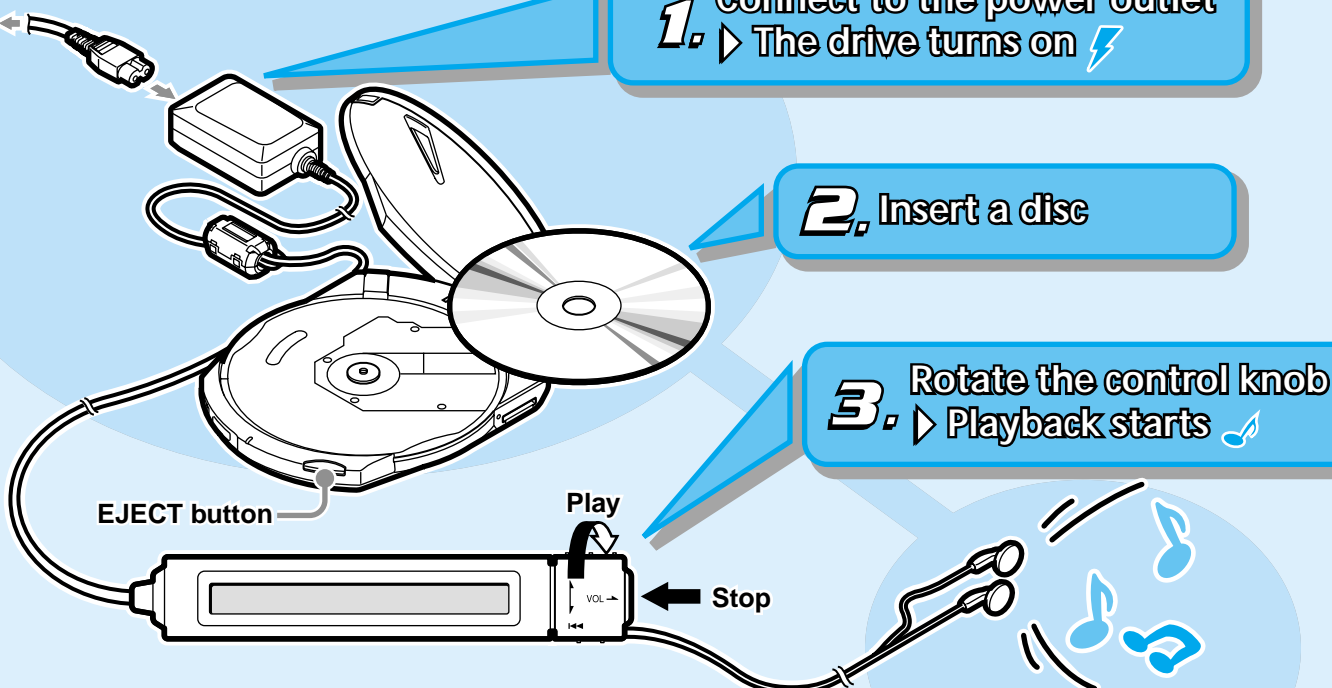
If the contents of the package are incomplete or in any way damaged, consult your retailer.

To listen to music

1. Connect to the power outlet
The drive turns on

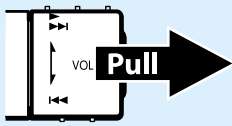
2. Insert a disc

3. Rotate the control knob
Playback starts



Adjust the volume

Raise the volume



Lower the volume

Adjust the volume

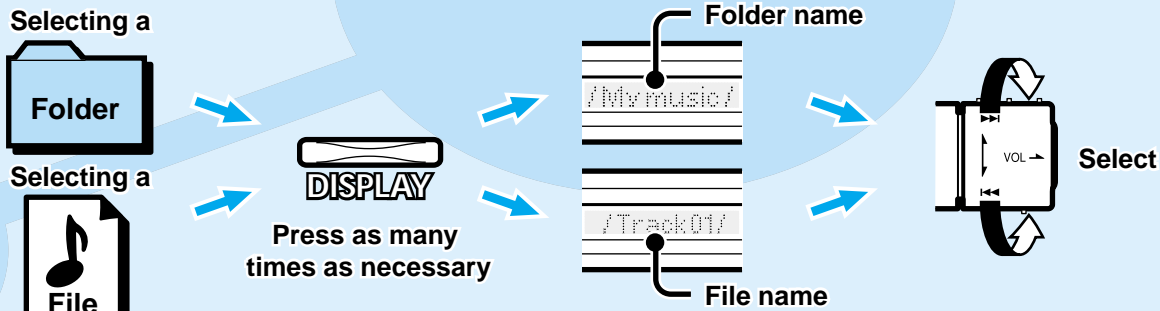
CHARGE/BUSY indicator

Red

Approximately 4 hours
(Charging is also performed in the background during playback)

Goes off

To listen to music files (MP3 or WAV)



For details about these and other operations, refer to the "User's Guide".

2 Turn on your computer



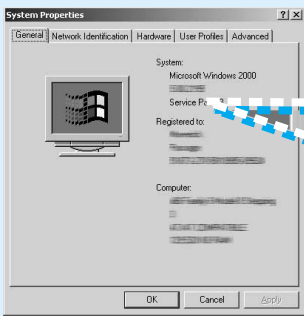
Windows 2000

Windows 2000 Service Pack 3 or later (SP3) needs to be installed on your computer before you can use the drive. Access the Microsoft Corporation Web to download service packs.
<http://www.microsoft.com/windows2000/downloads/servicepacks/>

Be sure to log on as the computer administrator.

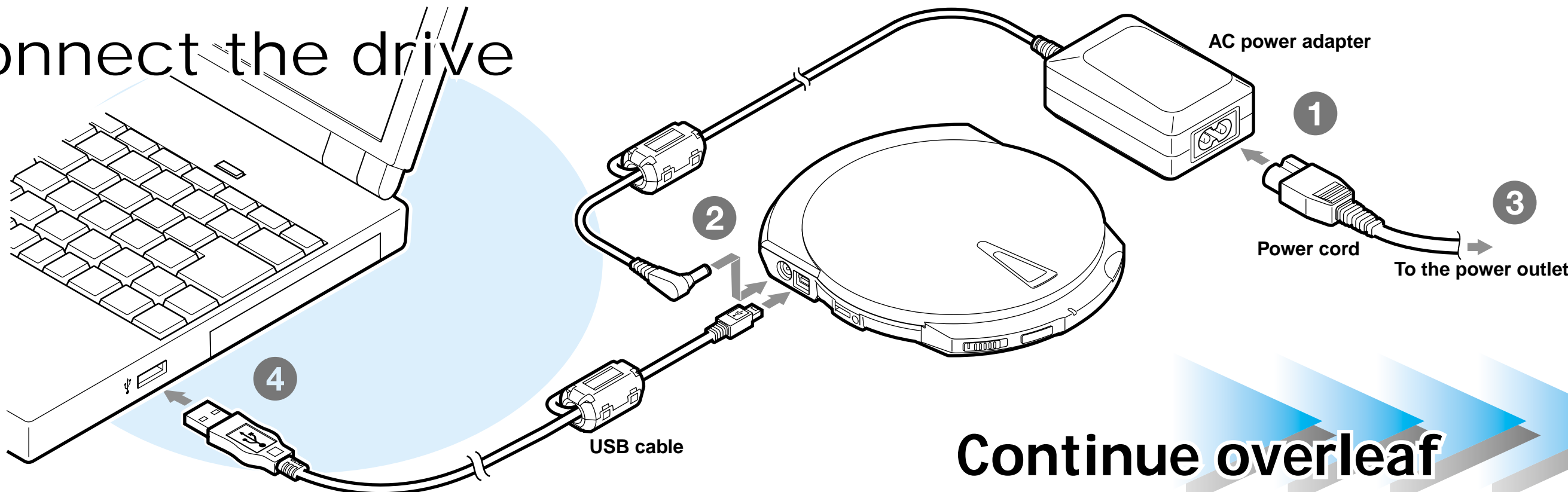
Verifying whether a service pack is installed

On the [Start] menu, point to [Settings], and then click [Control Panel]. In [Control Panel], double-click [System]. In the [System Properties] dialog box, on the [General] tab, verify that you can see the following.



Microsoft Windows
Service Pack 3
registered to:

3 Connect the drive



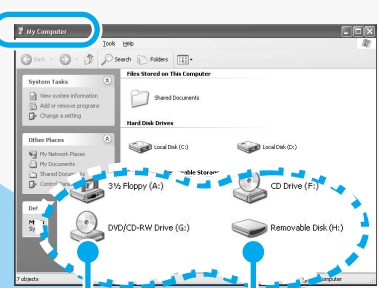
Continue overleaf

4 What operating system are you using?

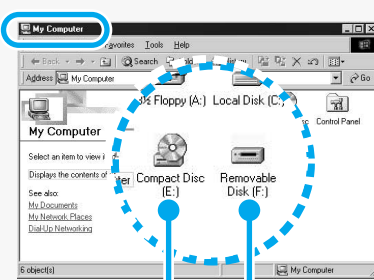
Windows XP/Me/2000 SP3

Confirm that your computer detected the drive

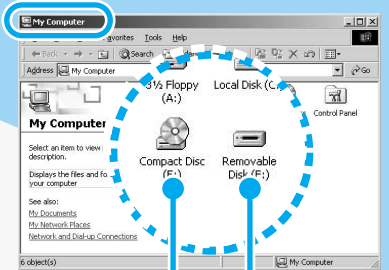
Windows XP



Windows Me



Windows 2000 (SP3 or later)



"Memory Stick" drive
CD-RW/DVD drive

"Memory Stick" drive
CD-RW/DVD drive

Proceed to **step 5**

Windows 98 Second Edition



Click



Software disc

Insert the software disc in a CD-ROM drive other than this one to install the device driver. You can also download the device drivers from the Web at the following address:

<http://sony.storagesupport.com/>

2



Click

3



Click

4



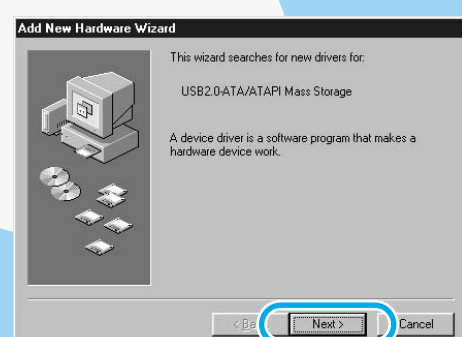
Click

5



Click

6

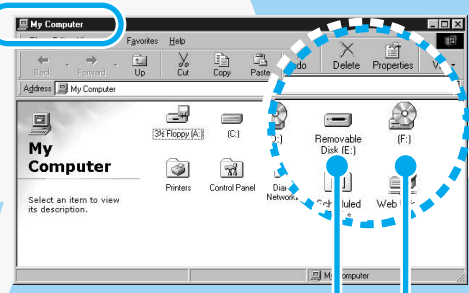


Click

7

Repeat steps 2 to 5.

8



"Memory Stick" drive
CD-RW/DVD drive

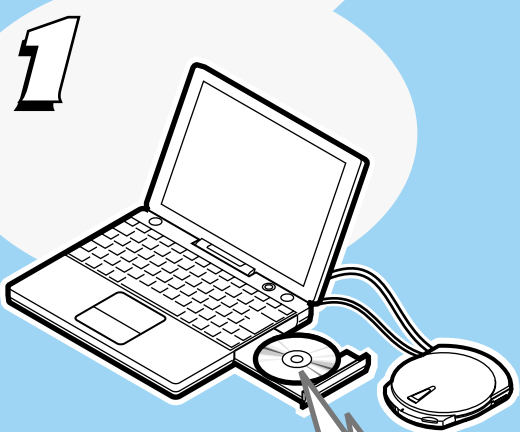
Proceed to **step 5**

Mac OS

2

Install the provided software

With Mac OS 9, you must install the writing software before you can use the drive.



Software disc



Installer

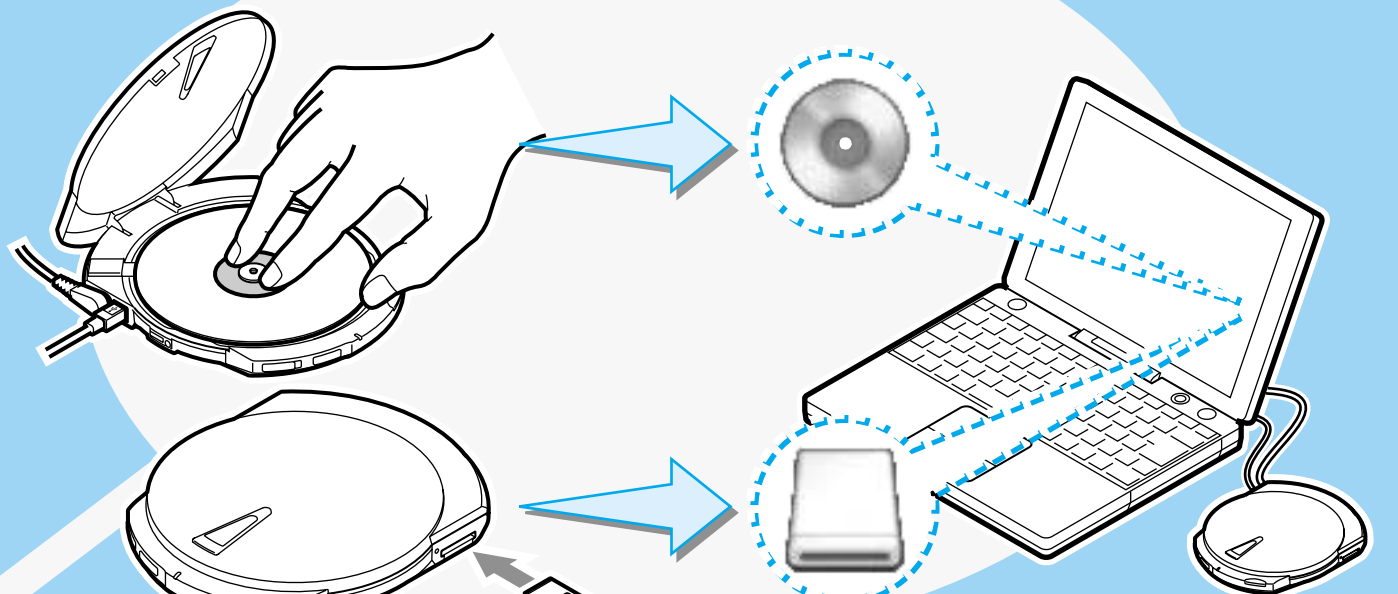
Click



Install the software

3

Confirm that your computer detected the drive



You're done!

Where to go from here

To use the software

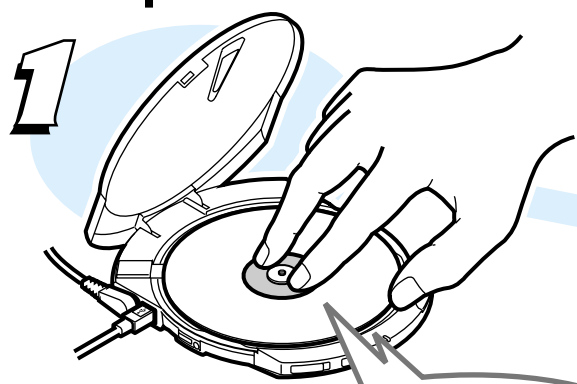
Refer to the software manuals* for details.

To use the drive

Refer to the "User's Guide" for details.

* Software manuals: refers to the "Software Quick Start Guide", as well as the user's guide and Help for each program on the software disc.

5 Install the provided software



Software disc

2



Click

3

Install the desired software

You're done!

Where to go from here

To use the software

Refer to the software manuals* for details.

To use the drive

Refer to the "User's Guide" for details.

* Software manuals: refers to the "Software Quick Start Guide", as well as the user's guide and Help for each program on the software disc.